

Ray 7: Ceremonial Magic and Organization

Energy

Rhythmic

Cyclic

Self-Organizing

Building

Quality

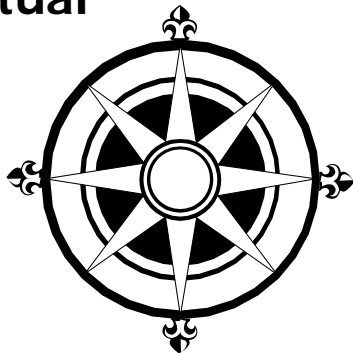
Order

Transformation

Manifestation

Formality

Ritual



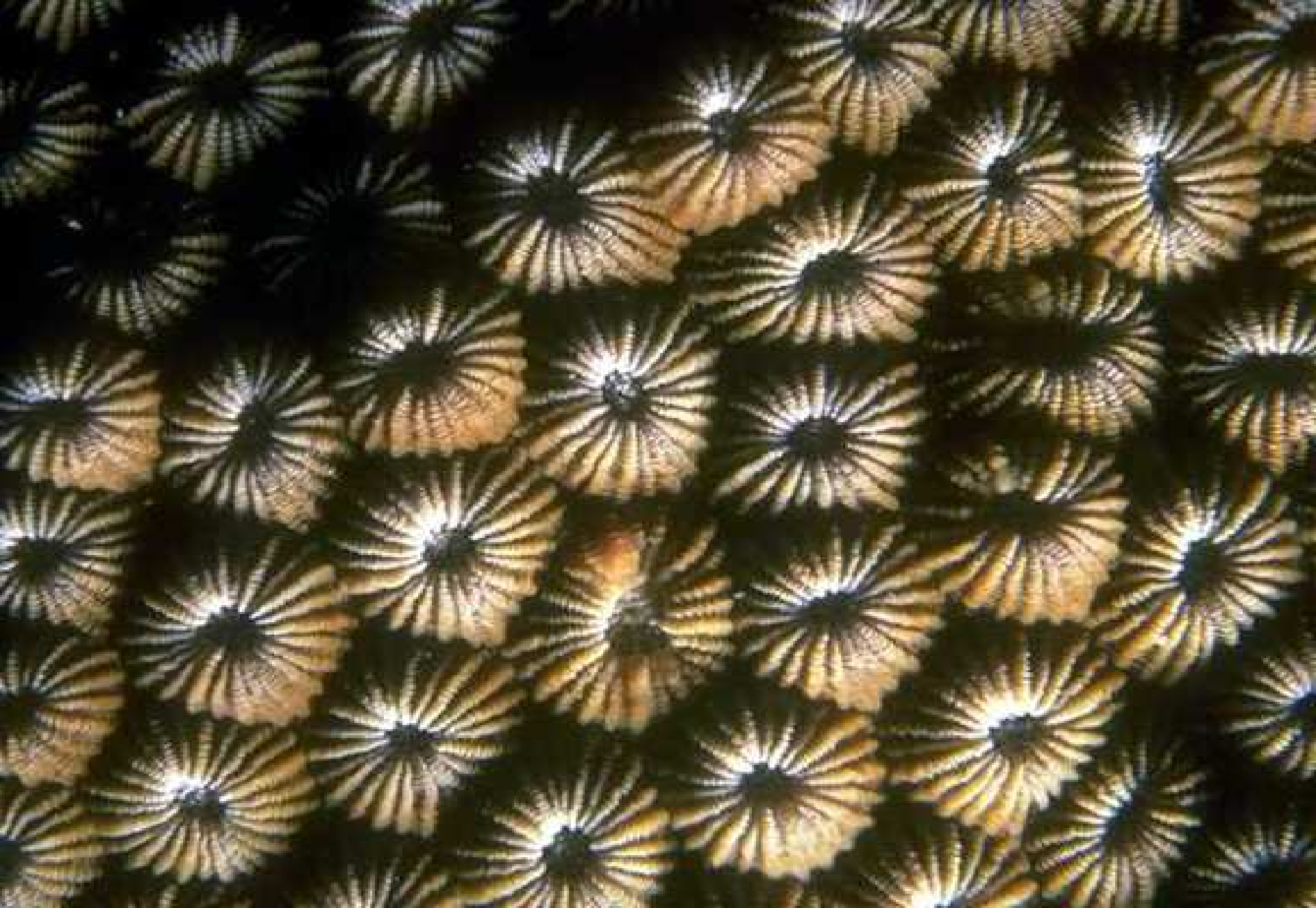
Symbols

Magic Wand

Crystal

Map

Beaver



The Seventh Ray is Order and Organization.



It organizes, formalizes, and brings conformity.



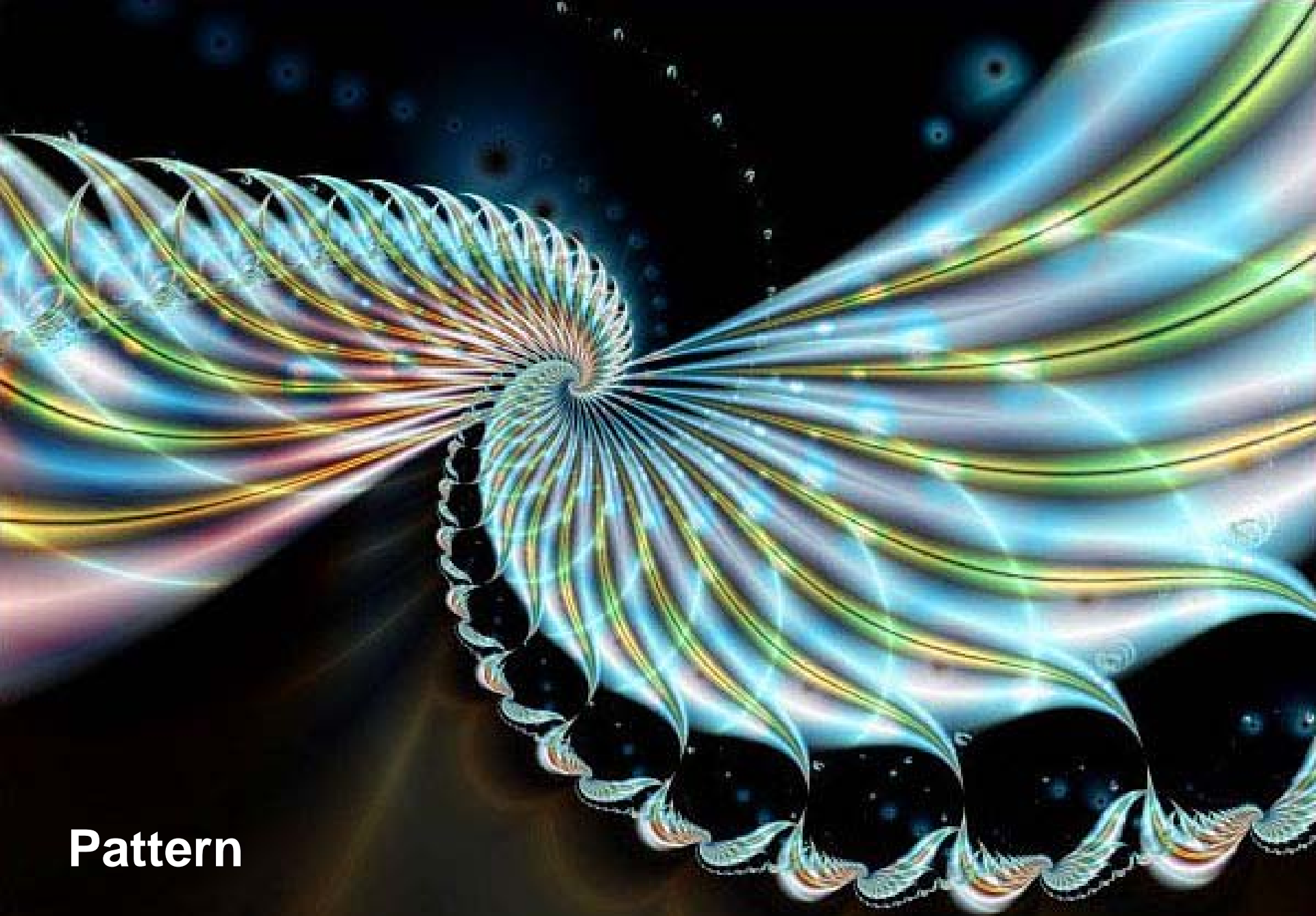


It is the ray of pattern, and all patterns in nature.



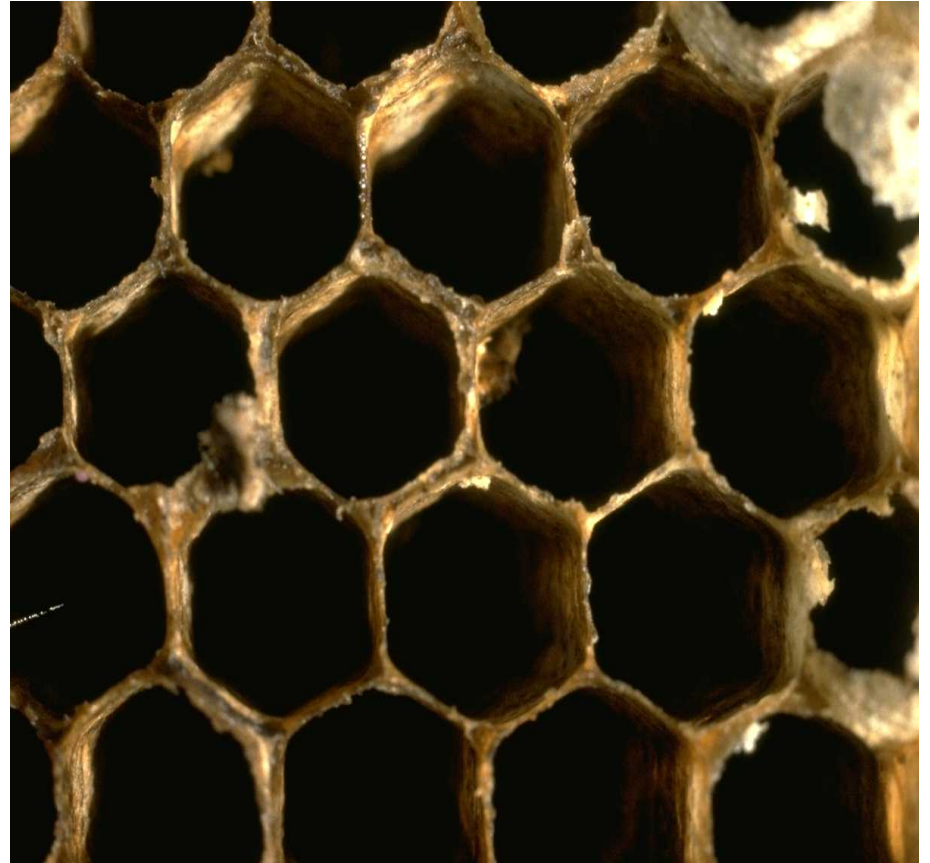


Pattern in Nature



Pattern

Uniformity, pattern, building the form



Order



The Seventh Ray creates order in



Design



The Seventh Ray systematizes.



**It is the ray of
Architecture.**



**Structures, Architecture,
Building the form to allow the Divine
to come through.**



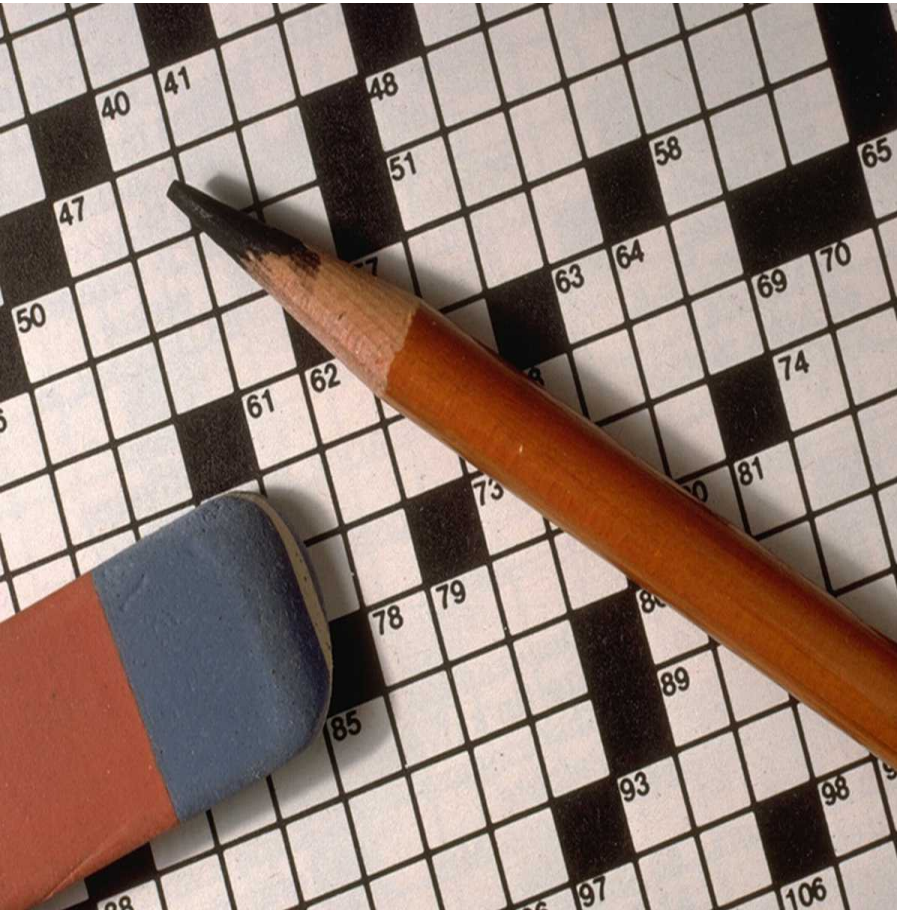


Uniformity

The Ray of Ecology



Puzzles





**Efficient
Orderly
Systematic
Sequential**

Ritual Formality Pomp and Ceremony





Ceremony and Ritual



Perfection of form



Perfection of
the form.





Sculpture

Perfection of the Form



**It is the ray of
grace
within the form,
of poise,
and that which
is delicate.**



Kinesiology Rhythm

Coordination, rhythm and timing.



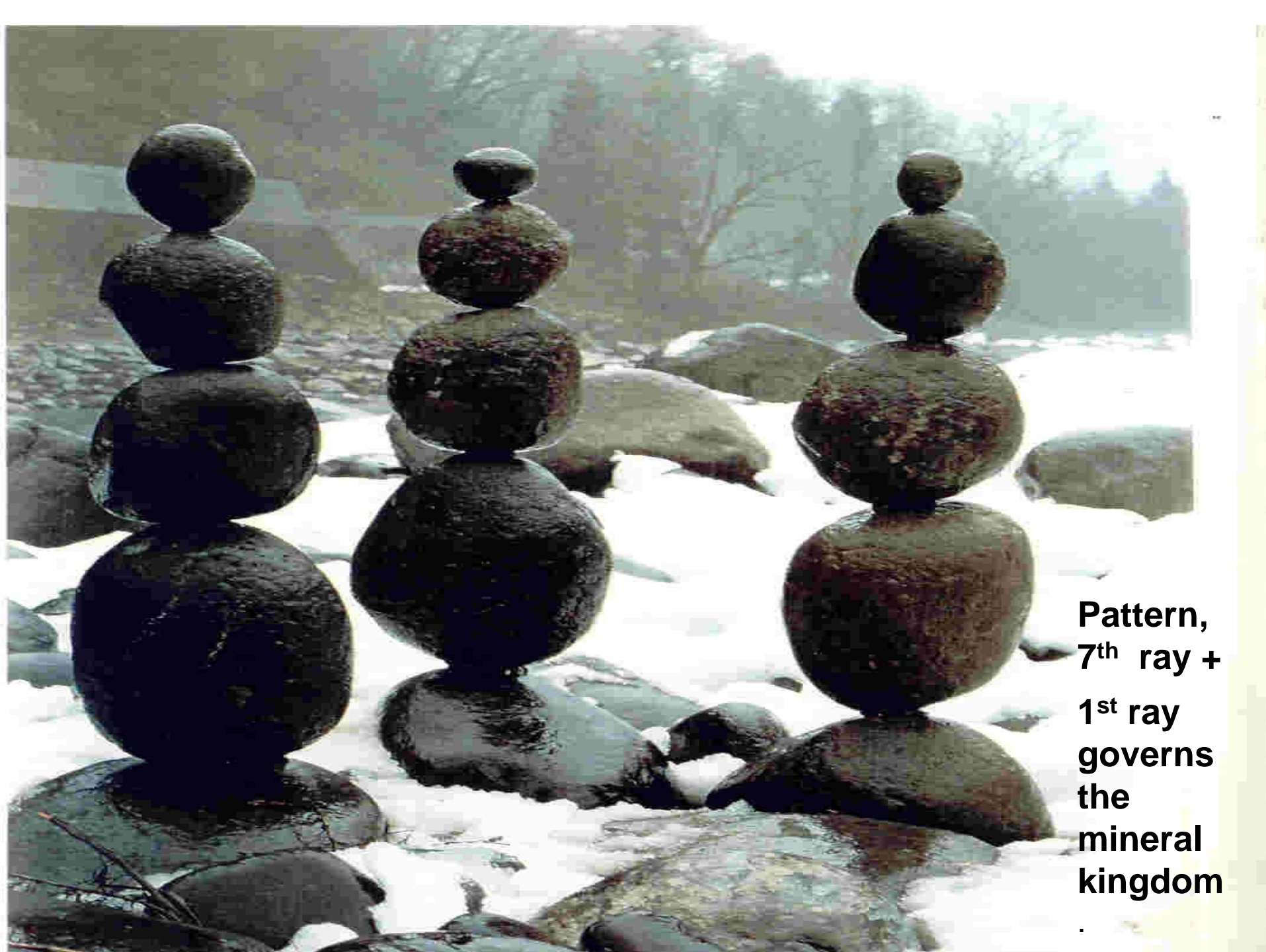
Darren England / Allsport





Craftsman, Artisan

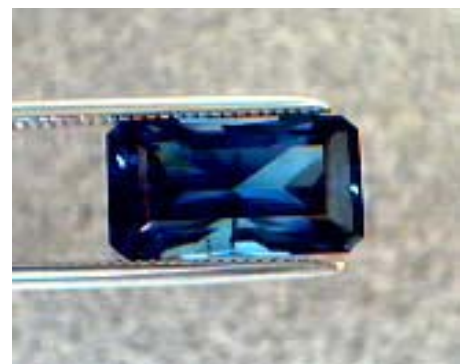
Because of order and organization, it brings shape and utility to



**Pattern,
7th ray +
1st ray
governs
the
mineral
kingdom**







**The 7th Ray + 1st Ray
govern
the mineral
kingdom.**





Functionality, formality and propriety.

Formality
Grace



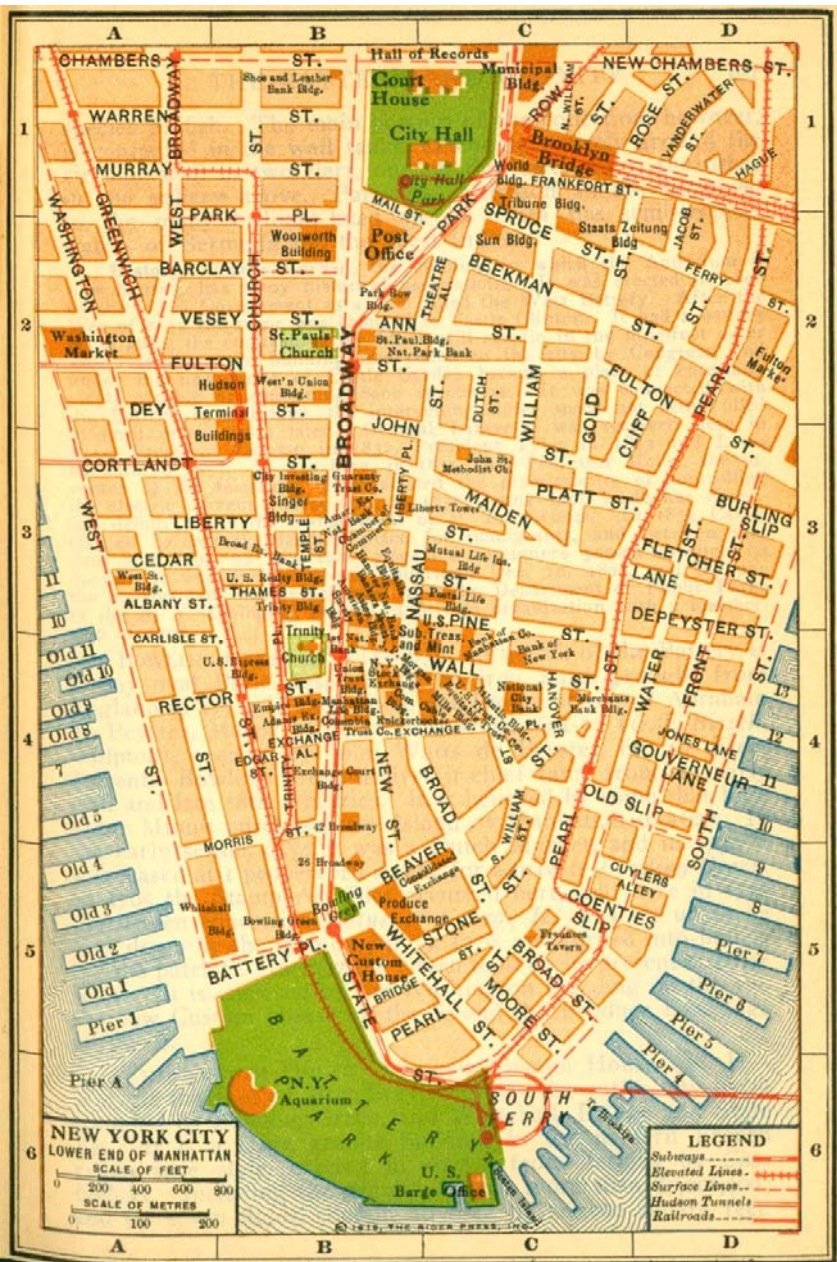
Court of law





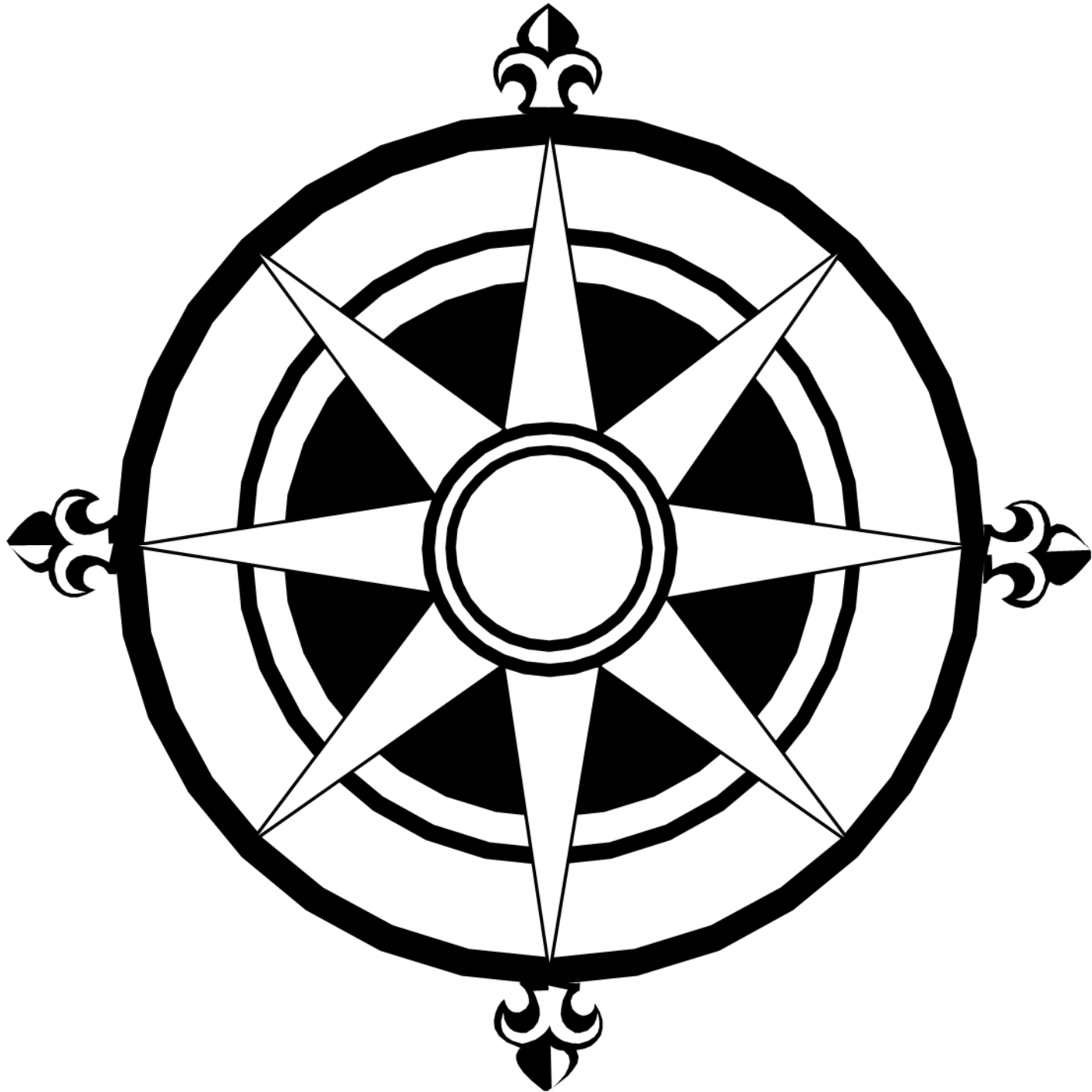
**Following rules
Obeying the law
Law and Order**

Map making, city planning





Order brings orientation.



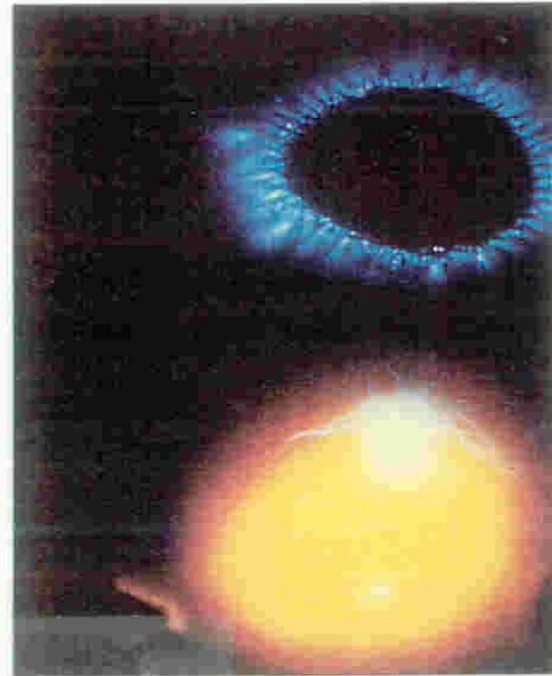
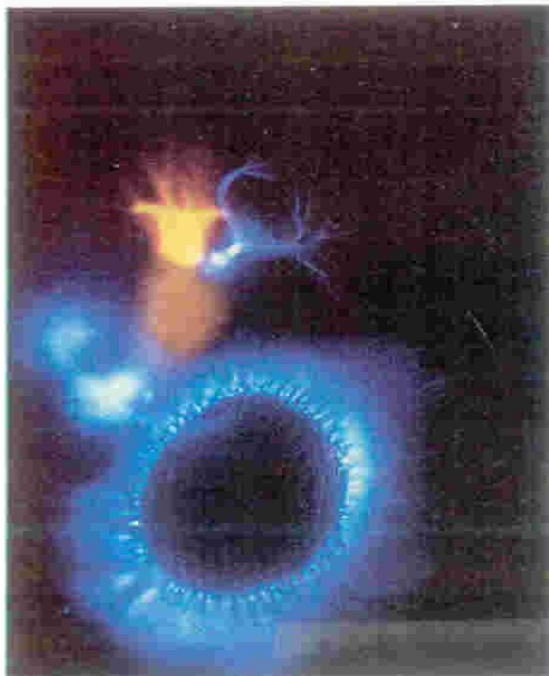
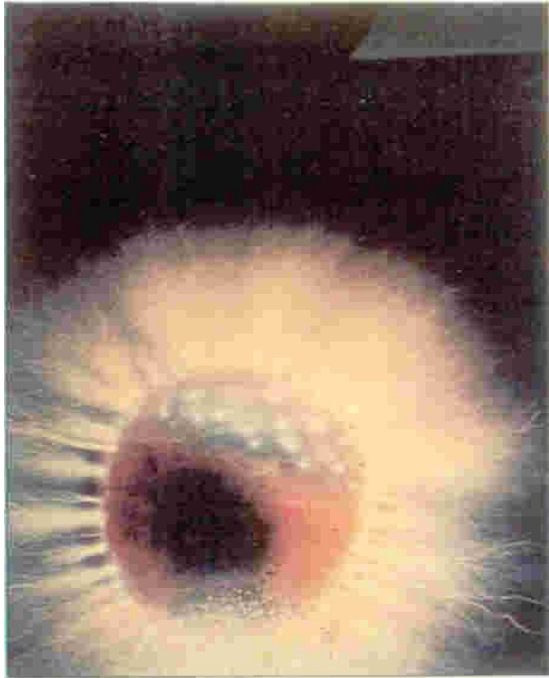


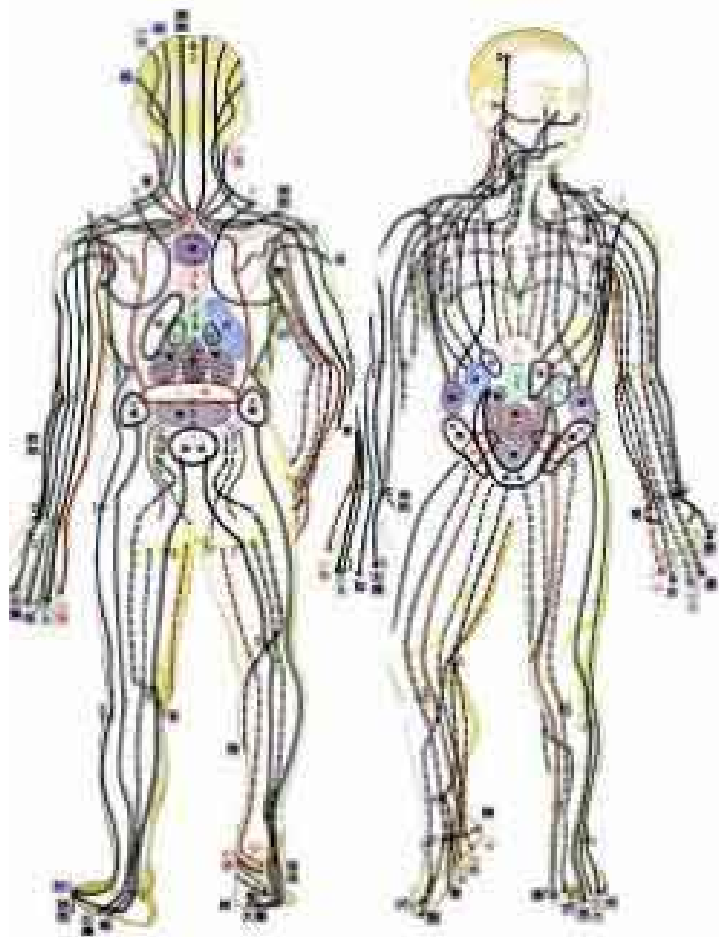
Surveying, mapping





**The Etheric Field
– the electro-
magnetic energy**





Etheric Energy fields, lay lines.



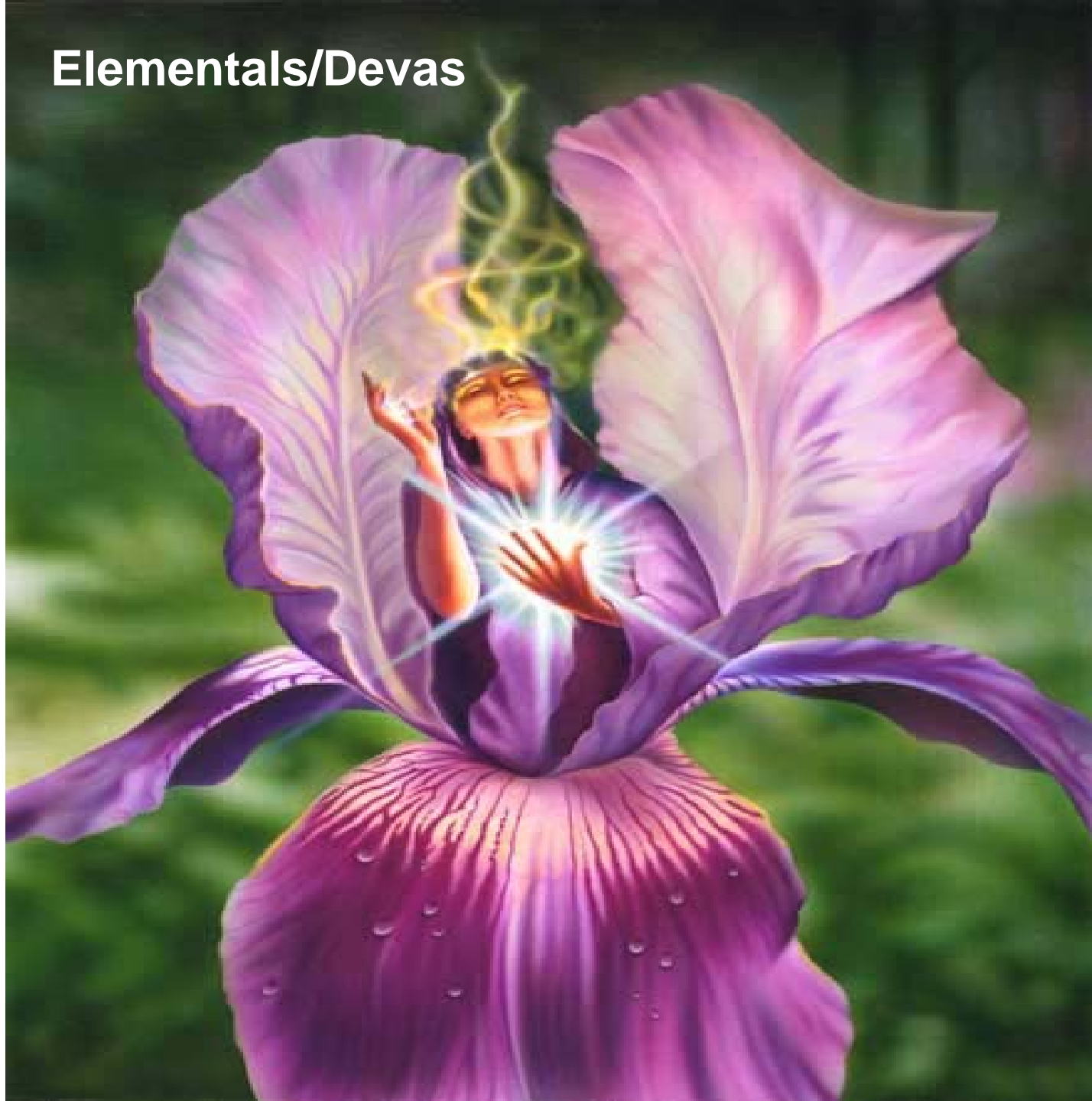
The 7th Ray rules the Deva Kingdom

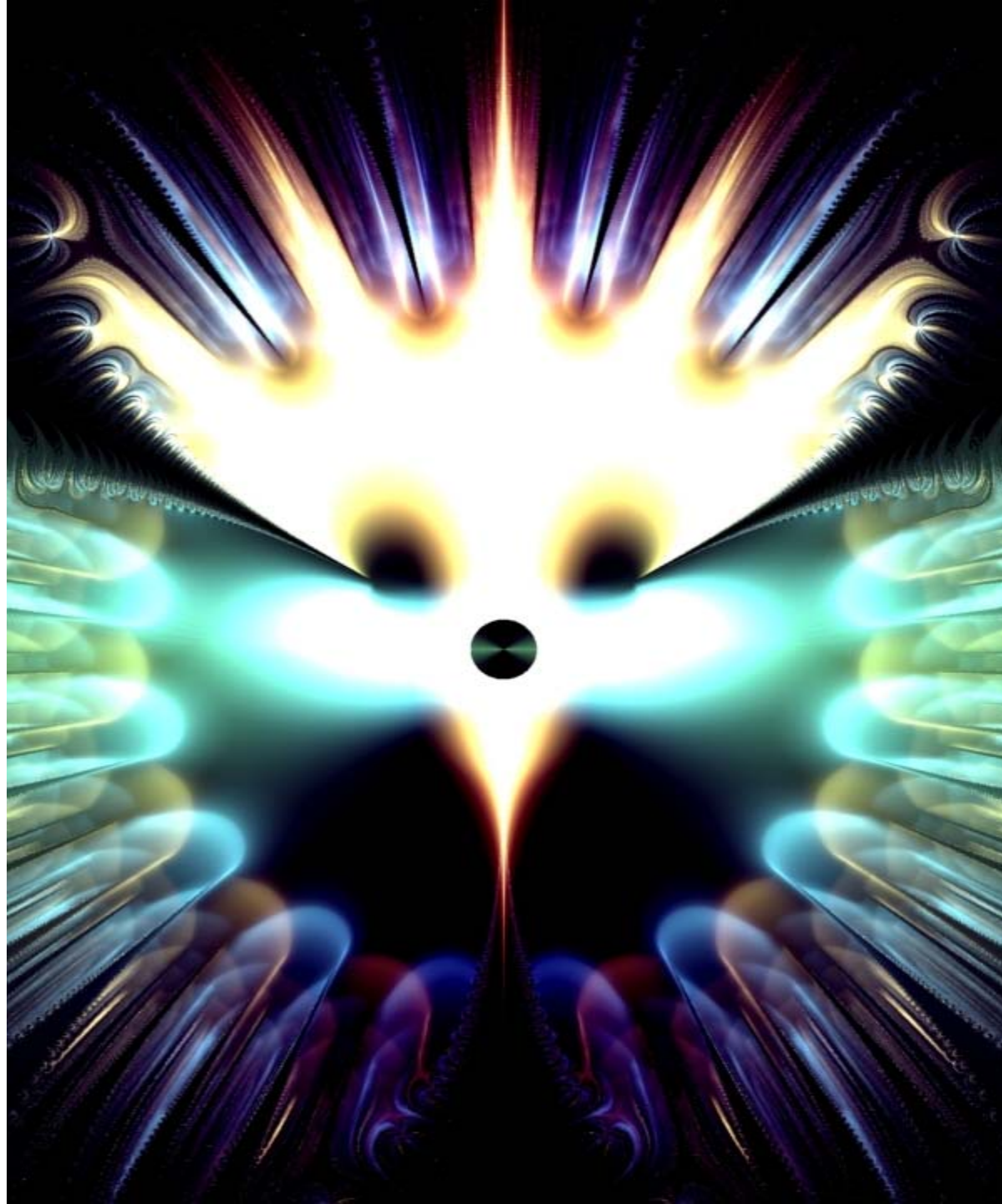


Magic



Elementals/Devas







Ray 7: Ceremonial Magic and Organization

- **Symbol** - beaver, calendar, gavel, map, city, compass, clock, magic wand, prism, ceremonial robes, agenda, schedule, mosaic, mandala, blueprint, crystal
- **Animal** - beaver, bee (honeycomb), salmon (migration), Monarch butterfly, birds making nests (building), termites
- **Country** - Spain (P), Russia (S), Canada (P)
- **Institutions** - court of law, architecture, ecology and conservation – Sierra Club, Green Peace, Audubon Society, museum, libraries
- **Vocational tendencies** - organizer, administrator, management, design, building, craftsman, construction, architecture, ritual, choreography, dance, kinesiology, judge, dowsing, beautician, systems management, city planner, map making.
- **Persons** - Buckminster Fuller, Emily Post, Martha Stewart, Walt Disney, Merlin, Marie Curie, StrataVARI, Frank Lloyd Wright, Benjamin Franklin (postal system), John Dewey (Dewey decimal system)
- **Colour** - exoteric: white - esoteric: violet

Ray 7: Ceremonial Magic and Organization

- **Learning style** - formal, efficient, systematic and sequential, learn by doing, prioritizes
- **Teaching style** - efficient and orderly, according to protocol, uses practice and repetition, sequential
- **Gem** - crystal, amethyst
- **Planet** - Uranus
- **Zodiacal signs** - Capricorn (earth – structured, ritualistic, formal, even rigid), Aries (illumines the Divine Order and impels it into matter)
- **Day** - Monday
- **Plants** - mountain laurel (purple flower), intricate structured plants – Sun flower (also 4 – yellow), hyacinth, lilac
- **Music** - march, polka, waltz

Ray 7 Distributed through...

Signs:

Cancer, Capricorn

Planets:

Uranus

Ray 7

STRENGTHS

Power to create order

**Power to manifest and to work efficiently upon the material
plane**

Tendency to plan and organize

Manages detail

Coordinates groups

Ritual and ceremony

Power to build

Renovates and transforms

Power to synthesize parts

Keen sense of rhythm and timing

Power as a magician

Power to work with the devas and elemental forces

Ray 7

WEAKNESSES

Rigid orderliness, formalism

Routinization, subservience to habit

Crystallization, overly rigid, inflexible

Structured or planned, not spontaneous or adaptable

Conformity, status-quo

Over-concern with rules, regulations, and the 'dead letter' of the law

Hard to change patterns – compulsive/obsessive (addicted to patterns)

Excessive perfectionism of the form

Judgment based upon appearances

Addiction to occult phenomena, spiritualism

Dark magical arts

Ray 7 — Ceremonial Magic



Energy

Patterning
Rhythmic
Cyclic
Self-Organizing
Building

Quality

Ritualistic
Systematizing
Transformation
Manifestation
Magical

Symbols

Magic wand
Crystal
Map
Compass
Beaver / Ant

Physical Body

Trainable
Habitual
Graceful
Refined

Body needs routines
Over-sensitivity to environment
Lack of resilience

Soul Expression

Creator of the Form
Divine Alchemical Worker
Power to Cooperate
Power to Vivify
Create Transformation through
Structure and Design

Personality Expression

+

Structured
Organizer, Manager
Respect for the law
Works well with form
Protocol

—

Rigid orderliness
Resistant to change
Appearance Bound
Conformist
Follow the letter of the law
Regimented